

**BOSTON
PUBLIC
LIBRARY**

Information Gathering

**BOSTON
PUBLIC
LIBRARY**

Information Gathering

South End Branch Library Planning Study Phase

FOSEL March 2020

The Friends of the South End Library [FOSEL] will be collaborating with the Boston Public Library [BPL] and the City of Boston to reinvent the South End library with you, the South End Community.

A great example of the rebirth of today's public libraries can be found right here in Boston with the award-winning renovation of our own Central Library's 1972 Phillip Johnson Building on Boylston Street.

A number of the BPL's 24 branches have undergone similar transformations; others are awaiting their re-openings this year and yet others are scheduled to begin renovations in the next five-ten years, including the South End branch library.

The Boston Public Library's mission is to preserve and provide access to historical records of our society, and to serve the cultural, educational and informational needs of the city and the Commonwealth.

- Facilitate sustainable funding growth
- Systemwide improvements, acquisitions, and access supporting the community's needs
- Enhance services systemwide with special emphasis on youth services
- Develop and implement a digital, technological and innovation plan
- Improve and enhance the staff and organizational culture a focus on support, engagement, productivity and customer service
- Be ready for the unexpected

FOSEL has formed a Planning Committee of Board volunteers to gather information about what the South End library renovation might entail. We have visited a number of newly completed libraries in Boston and elsewhere, talked with their library staff and Friends groups.

The Planning Process is sponsored by the BPL and the City's Public Facilities Department and begins with a Programming Study, funded in the FY 2020 budget. The first step is a public information meeting sponsored by the BPL with South End residents.

FOSEL Building Committee Process

- Visiting renovated neighborhood branch libraries
- Gathering information on “best practices”
- Review data and demographics of the South End
- Share findings with the community
- Hold interactive “visioning workshops”

Trends

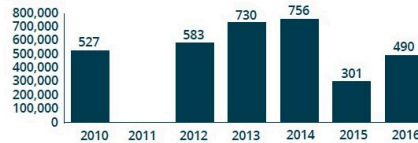
Historical Trends in South End

- The population grew by 21% and occupied housing units grew by 15% from 2000 to 2015.
- Healthcare and Social Assistance is the largest industry in South End, accounting for nearly half of all payroll jobs.
- From 1950 to 2015, the share of South End renter-occupied units decreased dramatically, from 90% in 1950 to 60% in 2015.
- In 1970, South End had 5% Hispanic residents. By 2015 more than 16% of the population was Hispanic.
- In 2015, almost a quarter of South End's population was foreign born, compared to just 15% in 1970.
- The percentage of South End residents ages 25 and over and with a Bachelor's degree doubled between 1980 and 2015.

The Future for South End

- South End's growth is poised to continue, with 1,896 new units of housing approved between 2010 and 2016.⁴

BPDA Board-Approved Development (in Thousands of Feet²)
2010-2016



BPDA Board-Approved Housing Units
2010-2016



Produced by the Boston Planning & Development Agency
Research Division, August 2017

Information

For more information about Boston's demographics or economy, please visit bostonplans.org/research-maps

Please contact us at research@boston.gov with additional questions.

Martin J. Walsh
Mayor

Carol Downs
Treasurer

Brian P. Golden
Director

Dr. Theodore C. Landsmark
Member

Timothy J. Burke
Chairman

Michael P. Monahan
Member

Priscilla Rojas
Vice Chairman

Teresa Polhemus
Executive Director/Secretary

The South End Demographics of Neighborhood

People

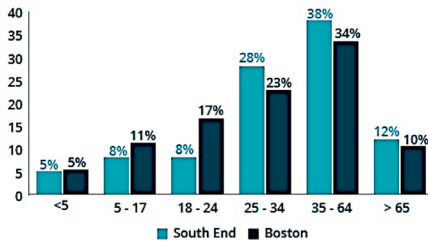
Population Growth

- South End had 31,601 residents in 2015, 5% of Boston's population.¹
- South End grew by 21% from 2000 to 2015, faster than the city's growth of 15% over the same time period.

Age Distribution

- In 2015, 13% of South End residents were children, compared to 16% in Boston as a whole.
- South End's 25 to 34 year olds represent 28% of the neighborhood population, slightly higher than Boston (23%).

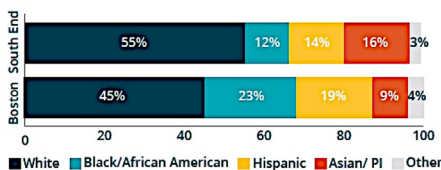
South End & Boston Residents by Age
2015



Diversity

- About a quarter of South End's population was foreign born, almost the same as the city as a whole (27%).
- In 2015, The Asian/Pacific Islander population was 16.4%, compared to only 9% in Boston as a whole.

South End & Boston Residents by Race
2015



Economy

Jobs

- South End had 30,387 jobs in 2014, 28% of which were in Healthcare and Social Assistance.²
- South End has 2.05 payroll jobs per resident worker and 5.4% of the city's payroll jobs.

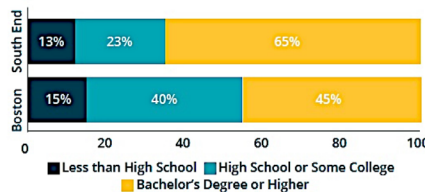
Labor Force

- South End's labor force had 19,900 people in 2015, 5% of the Boston resident labor force.
- 71% of South End residents ages 16 and older participate in the labor force, compared to 68% for Boston.
- The top occupations of South End residents in 2015: Healthcare, Social Assistance, and Administrative Support.

Education

- 13% of total South End residents in 2015 were enrolled in a college or university.
- In 2014, about two thirds of South End residents ages 25 and older had obtained a bachelor's degree or higher.

Educational Attainment (Age 25+)
2015



Income

- The median household income in South End in 2015 was \$77,161, compared to the Boston median of \$55,777.

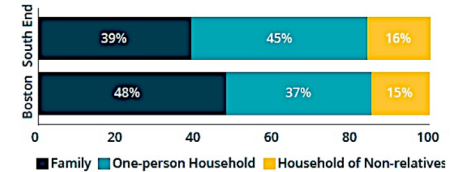
Notes: Demographic data are for the Census-tract approximations of the South End. Sources: (1) U.S. Census Bureau, 1990-2010 Decennial Census and 2011-2015 American Community Survey, (2) OnTheMap Application and LEHD Origin-Destination Employment Statistics, 2014, (3) City of Boston assessing data FY 2016, (4) Boston Planning and Development Agency Board Memos.

Place

Households

- About 97% of South End residents live in households, 39% of which are families.
- All the remaining residents live at college dormitories or other institutions.

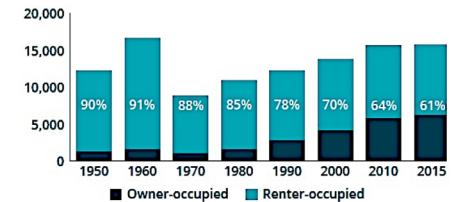
Household Type
2015



Renters and Owners

- In 2015, South End had 7,024 condos, 62% of which were owner occupied.³
- The median rent in South End in 2015 was \$1,207, compared to \$1,320 for Boston as a whole.

South End Occupied Housing Units
1950-2015



Vehicles

- In 2015, 57% of South End households had at least one vehicle, compared to 65% of all Boston households.
- The ratio of vehicles to households in South End was 0.72 in 2015, relatively smaller than Boston's 0.91 ratio.

The South End Demographics of Neighborhood



The South End Library Existing Space



The South End Library Existing Space



The South End Library Existing Space

**Adams Street
Brighton
Dudley
East Boston
Grove Hall**

**Honan – Allston
Hyde Park
Jamaica Plain
Mattapan
Roslindale**

	Renovation Complete	Size	Cost
Adams Street	2021	00,000 sf	\$ 19 million
Brighton			
Dudley Square			\$ 16 million
East Boston			\$
Faneuil			\$ 7–9 million
Fields Corner			\$ 15–20 million
Grove Hall			
Honan Allston			\$
Jamaica Plains			\$ 10 million
Mattapan			\$ 12 million
Roslindale			\$
Uphams Corner			\$ 18 million

Boston Branch Libraries



Jamaica Plain Branch Library Utile Architects



Hyde Park Branch Library Swartz Silver Architects



Brighton Branch Library

The Historic & Town Center



Dudley Square Branch Library Utile Architects



Roslindale Branch Library Studio Enee / Leers Weinzapfel

The Historic & Town Center



Mattapan Branch Library William Rawn Architects

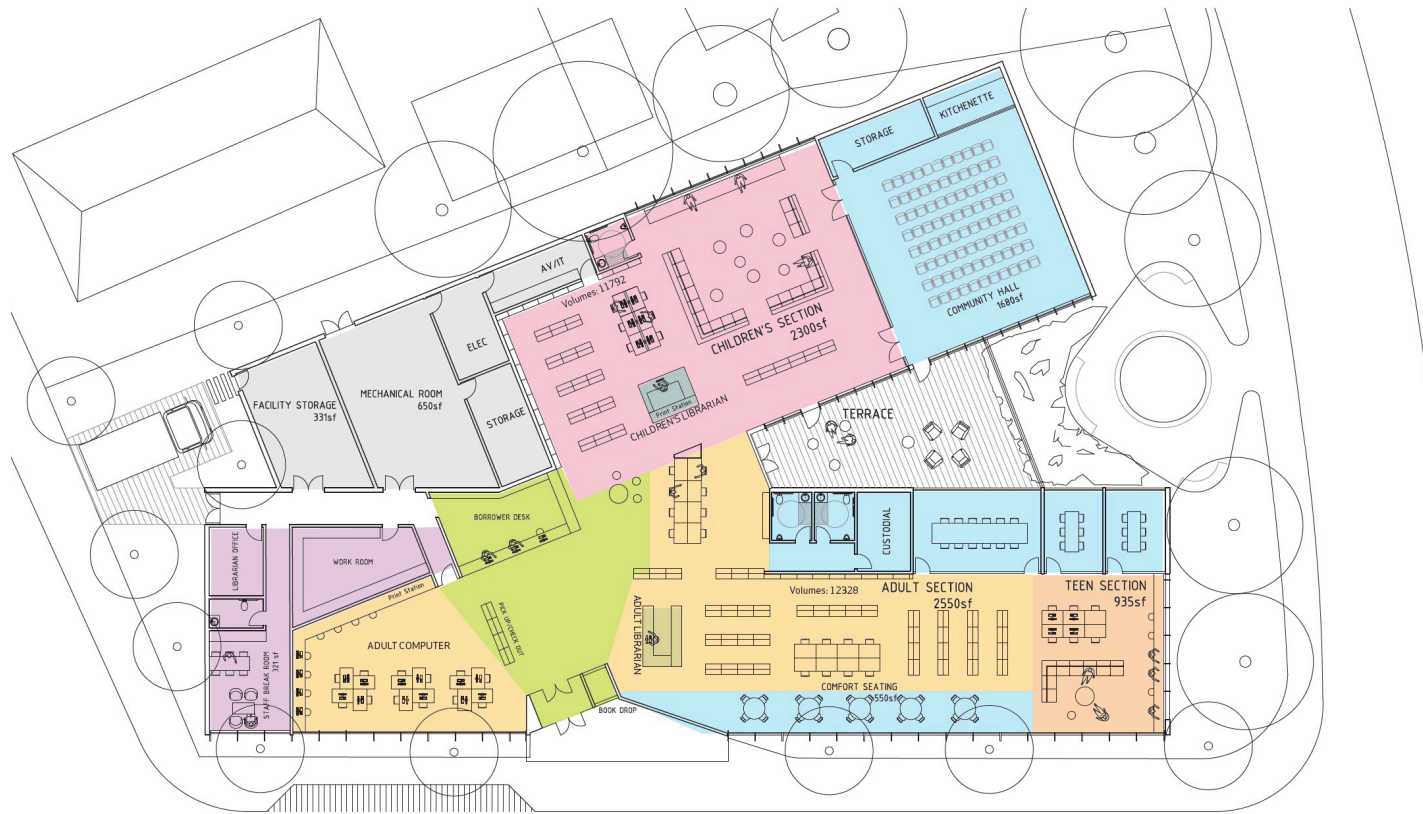


Alston Branch Library Machado Silvetti Architects



East Boston Branch Library William Rawn Architects

The Heroic Design



ENTRANCE ZONE 1,166 SF 1,000 SF	ADULT SECTION 2,521 SF 2,550 SF	TEEN SECTION 782 SF 935 SF	CHILDREN'S SECTION 2,262 SF 2,300 SF	SHARED SERVICE 2,984 SF 3,118 SF	ADMINISTRATION 693 SF 957 SF	BUILDING SERVICES 1,820 SF 1,640 SF
---------------------------------------	---------------------------------------	----------------------------------	--	--	------------------------------------	---

ADAMS STREET BRANCH LIBRARY PROGRAMMING STUDY- CAC MEETING - NADAAA

19

Adams Street Branch Library



Brighton Branch Library



Brighton Branch Library



Brighton Branch Library



Brighton Branch Library



Brighton Branch Library



Dudley Branch Library



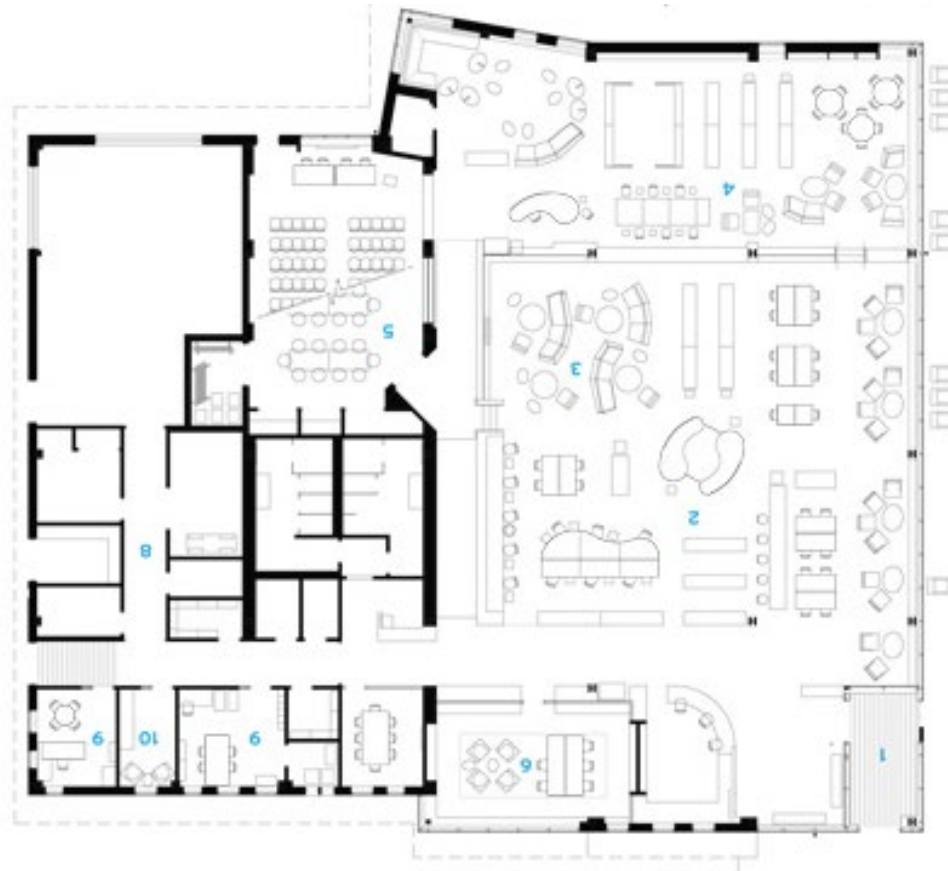
Dudley Branch Library



Dudley Branch Library



East Boston Branch Library



- | | |
|-----------------------|--------------------------|
| 1 ENTRY | 6 QUIET READING ROOM |
| 2 MAIN READING ROOM | 7 EXTERIOR READING PORCH |
| 3 YOUNG ADULTS LOUNGE | 8 SERVICE AREA |
| 4 CHILDREN'S AREA | 9 OFFICE |
| 5 MULTIPURPOSE ROOM | 10 STAFF LOUNGE |

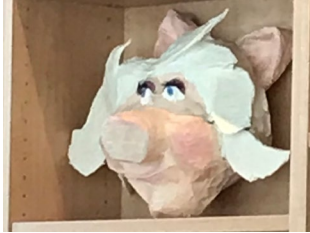
East Boston Branch Library



East Boston Branch Library



East Boston Branch Library



East Boston Branch Library



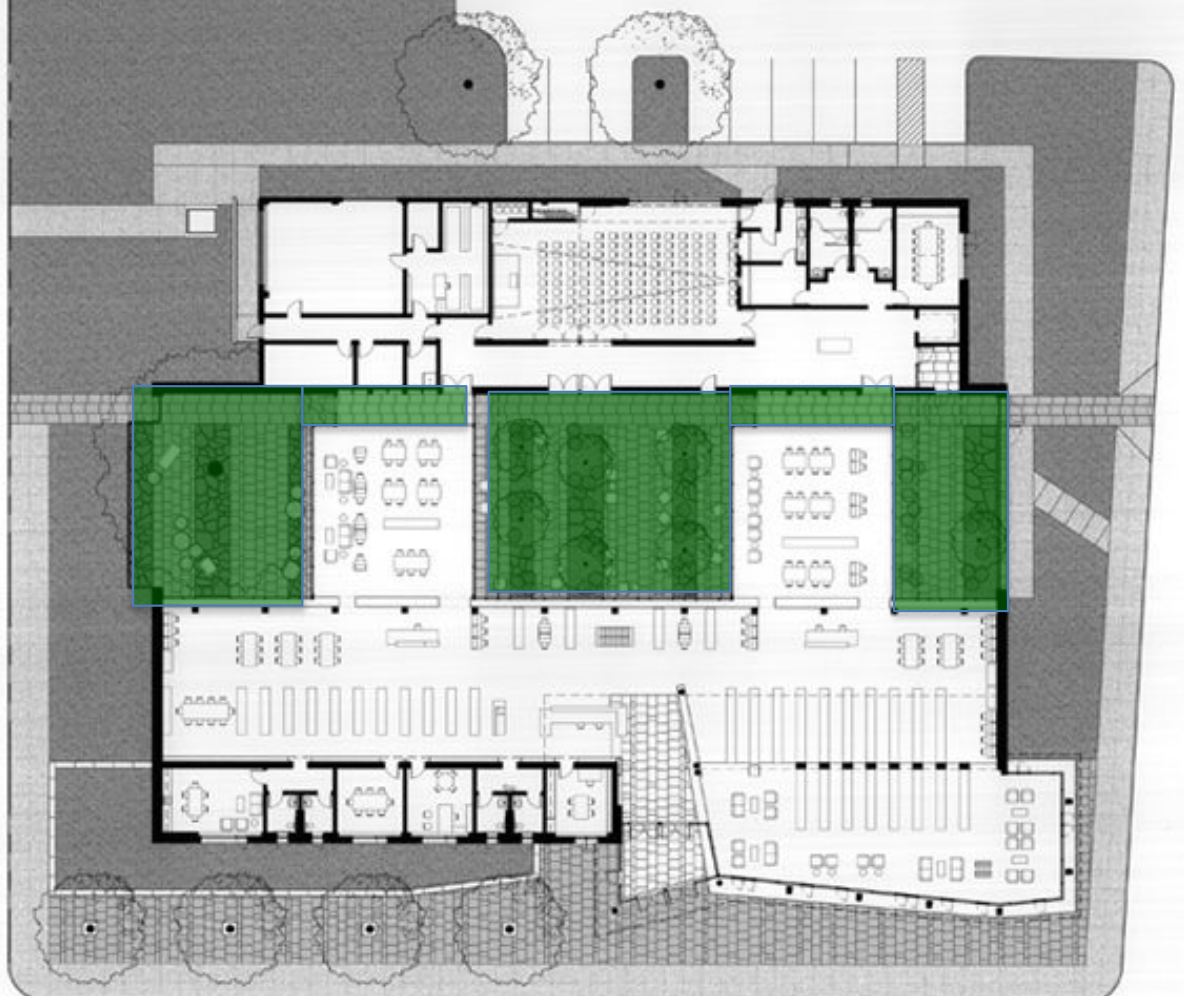
Honan - Allston Branch Library



Honan - Allston Branch Library



Honan - Allston Branch Library



Honan - Allston Branch Library



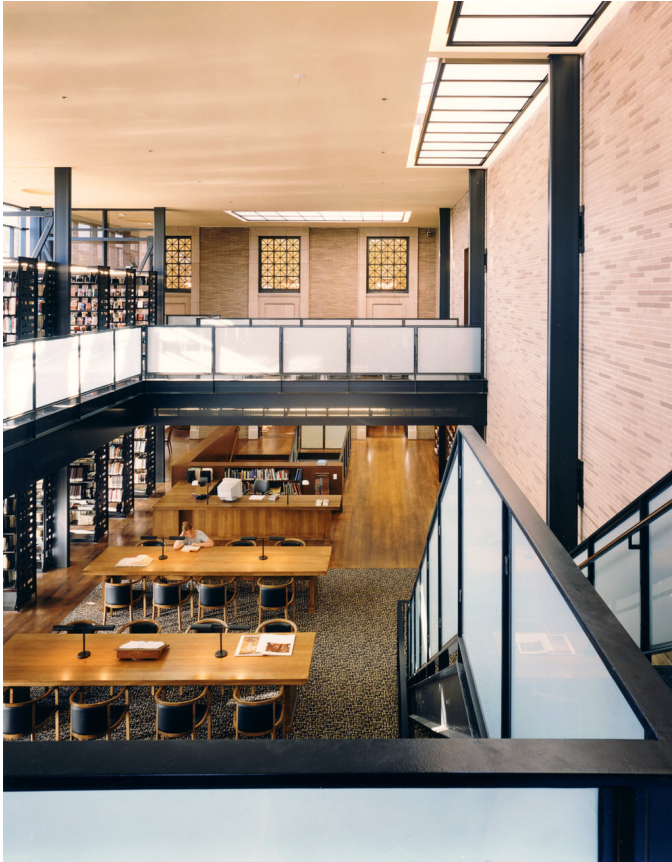
Honan - Allston Branch Library



Honan - Allston Branch Library



Hyde Park Branch Library



Hyde Park Branch Library



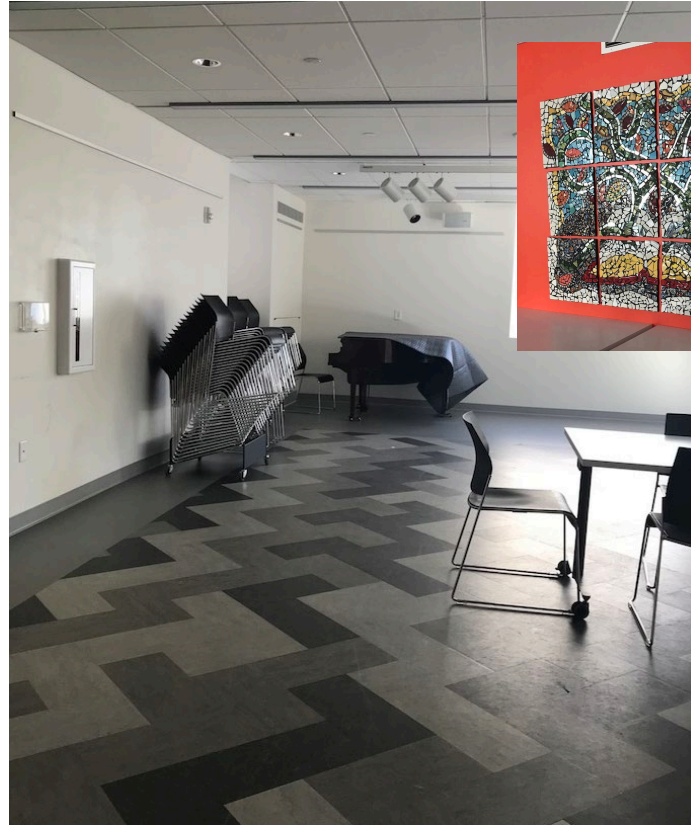
Jamaica Plain Branch Library



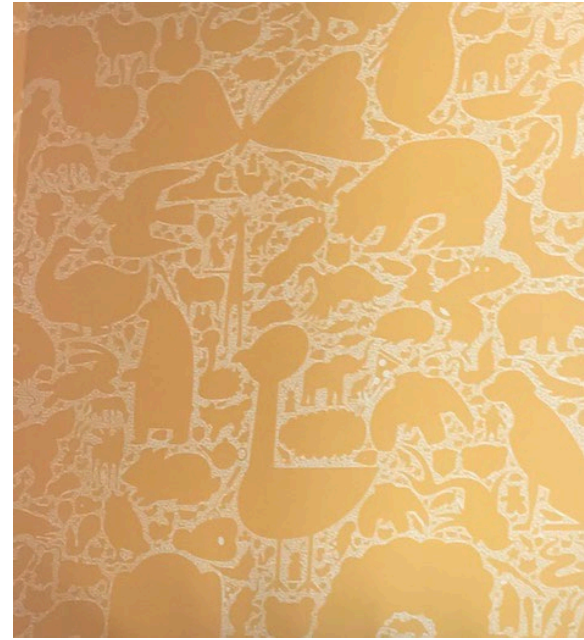
Jamaica Plain Branch Library



Jamaica Plain Branch Library



Jamaica Plain Branch Library



Jamaica Plain Branch Library



Mattapan Branch Library



Mattapan Branch Library



Mattapan Branch Library



Mattapan Branch Library



Roslindale Branch Library





Roslindale Branch Library



Roslindale Branch Library

The Public Library is much more than a building, it is a symbol of our values and holds the stories found in our communities. Boston is a city of diverse neighborhoods and for over a century our Public Branch Libraries tell the stories of those individual communities.

Questions and Discussion
